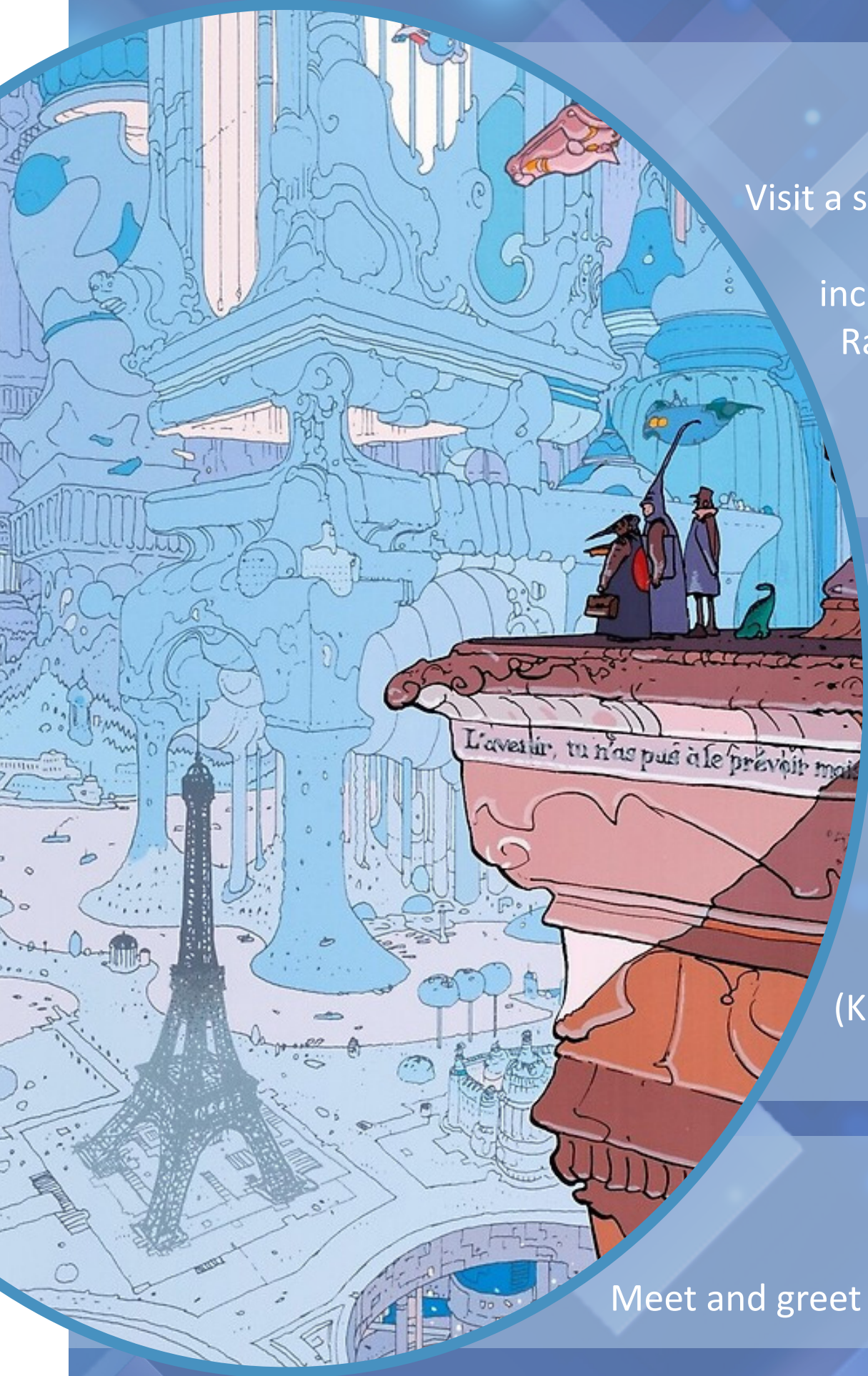


What is a Sci-Fi Scholar?

Special event at the *Spencer Research Library* on *Wednesday, April 26, 3:30-5:00pm* comprising an exhibition, a panel discussion, and a wine and cheese reception.

All welcome!



3:30 - 4pm
Johnson Room

Visit a special exhibition from the library's special collections with highlights including first editions of Jules Verne, Ray Bradbury, 17th- and 18th-century female-authored fairy tales, and letters by Ursula Le Guin and Theodore Sturgeon.

4 - 4:30pm
North Gallery

A discussion panel on the theme of "What is a sci-fi scholar?" with special guests Simon Bréan (Sorbonne Université, Paris), Christina Lord (UNC Wilmington), Giselle Anatol (KU), and Paul Scott (KU) will discuss what a sci-fi scholar does and teaches.

4:30 - 5pm
North Gallery

Meet and greet reception with drinks and nibbles.

KU LIBRARIES
The University of Kansas

Sponsored by KU Libraries, Gunn Center for the Study of Science Fiction, Department of French, Francophone & Italian Studies, French Center of Excellence, and Hall Center for the Humanities.

KU

Department of French, Francophone & Italian Studies

frenchitalian.ku.edu

785.864.9250

frenital@ku.edu

[@ku_ffit](https://twitter.com/ku_ffit)

[/kufrenchitalian](https://facebook.com/kufrenchitalian)

[@ku_italian](https://instagram.com/ku_italian)